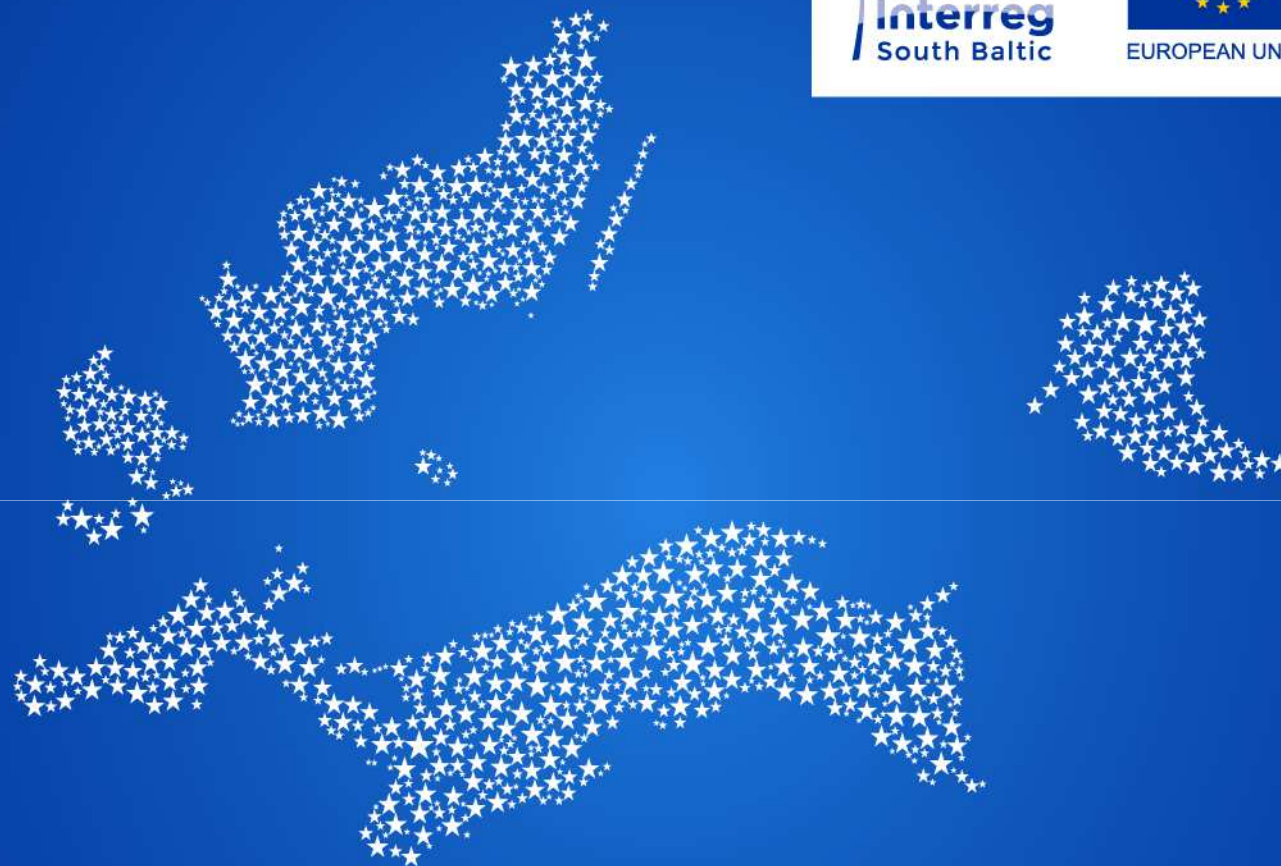




European  
Regional  
Development  
Fund



# Using Interreg South Baltic funds

for the internationalisation and innovation capacity of SMEs

# Description of your idea

## Innovation capacity building through Maritime clustering initiatives (ClusterMare)

- **The main idea** – to help blue and green SMEs to set realistic actions and measures and required information to form a clear concept of clustering and through trainings – maritime SMEs representatives will gain more skills to engage in clustering processes/initiate that independently.
- **The main objective** - to increase innovations capacity and potential of blue and green SMEs, working in maritime sector, through cross-border networking, training and capacity-building services.



@SouthBaltic



SouthBaltic



[www.southbaltic.eu/sme](http://www.southbaltic.eu/sme)

# Description of your idea

## The main activities will cover:

- cross-border **trainings** and capacity building services for blue and green sectors SMEs,
- provide business **advisory services on new services and products** in the SB market through cross-border ventures (clusters, networks),
- **Exchange experience** and **stimulate innovation transfer**,
- **develop and test of cross-border smart specialization strategies** and joint branding concepts in blue and green sectors of the South Baltic economy,
- **develop cross-border cooperation models**, networks and platforms with participation of SMEs, research institutions and public administration for common purposes development.



@SouthBaltic



SouthBaltic



[www.southbaltic.eu/sme](http://www.southbaltic.eu/sme)

## Description of your idea

- **The main objective** - to increase innovations capacity and potential of blue and green SMEs, working in maritime sector, through cross-border networking, training and capacity-building services.
- **The idea** – to help blue and green SMEs to set realistic actions and measures and required information to form a clear concept of clustering and through trainings – maritime SMEs representatives will gain more skills to engage in clustering processes/initiate that independently.



@SouthBaltic



SouthBaltic



[www.southbaltic.eu/sme](http://www.southbaltic.eu/sme)

## Partners / associated organisations found

- Klaipeda University (Lithuania)
- Maritime University of Szczecin (Poland)
- Baltic Wind Energy Association (Germany)



@SouthBaltic



SouthBaltic



[www.southbaltic.eu/sme](http://www.southbaltic.eu/sme)

## Partners / associated organisations required

- **Partners from Sweden**
- **Partners from Denmark**

Partners needed with contribution/capacity to maritime (or related to marine industry) fields!

*National and regional authorities, research institutions, associations, SMEs associations and chambers of commerce will be very welcomed.*

Contact me: **Rasa Viederyte**

rasa.viederyte@ku.lt +37060044312

Klaipeda University (Lithuania)



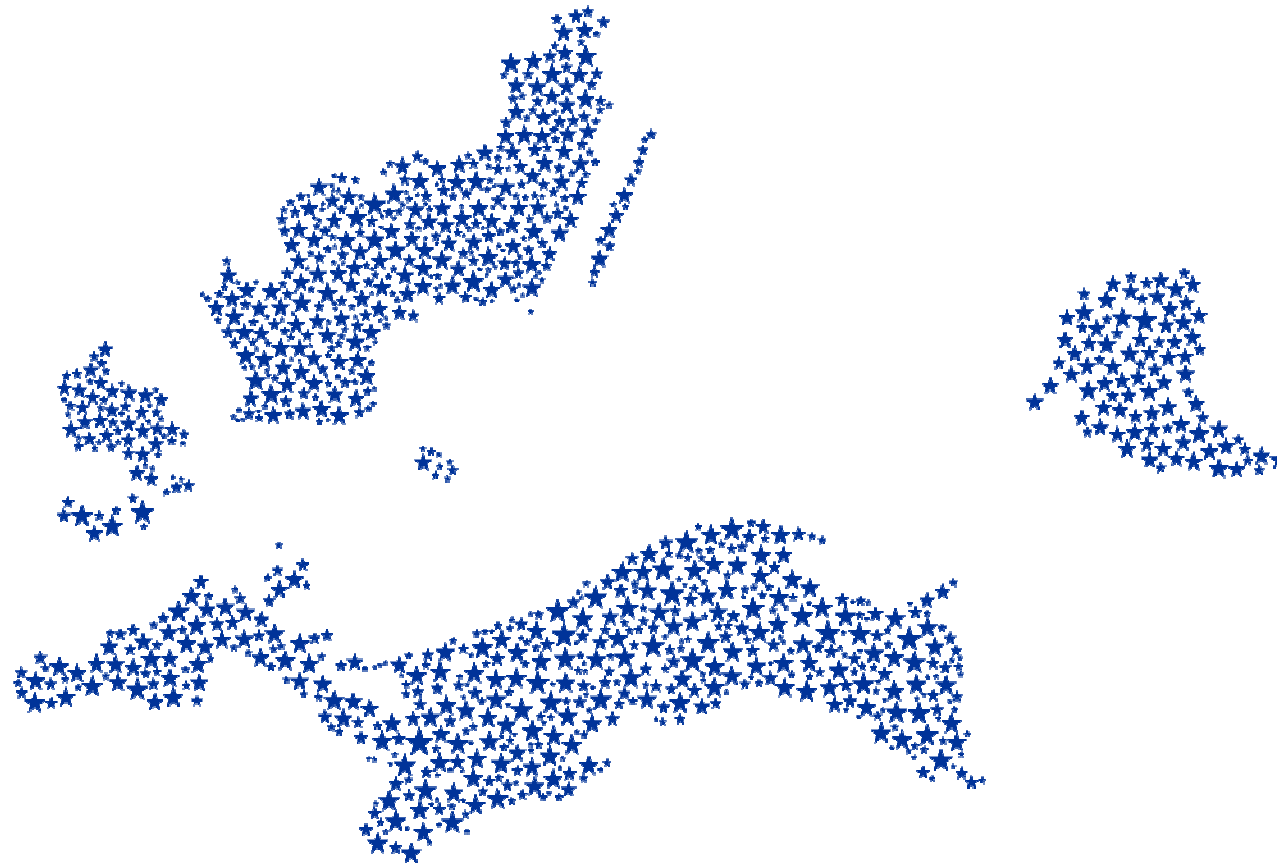
@SouthBaltic



SouthBaltic



[www.southbaltic.eu/sme](http://www.southbaltic.eu/sme)



---

# Thank you!

Name Surname | Position | Phone/ Email